A silhouette of a person with their arms raised in a gesture of triumph or freedom, set against a vibrant sunset sky with a sun low on the horizon and scattered clouds. The person is positioned on the left side of the frame, facing right.

higher education
access route
hear

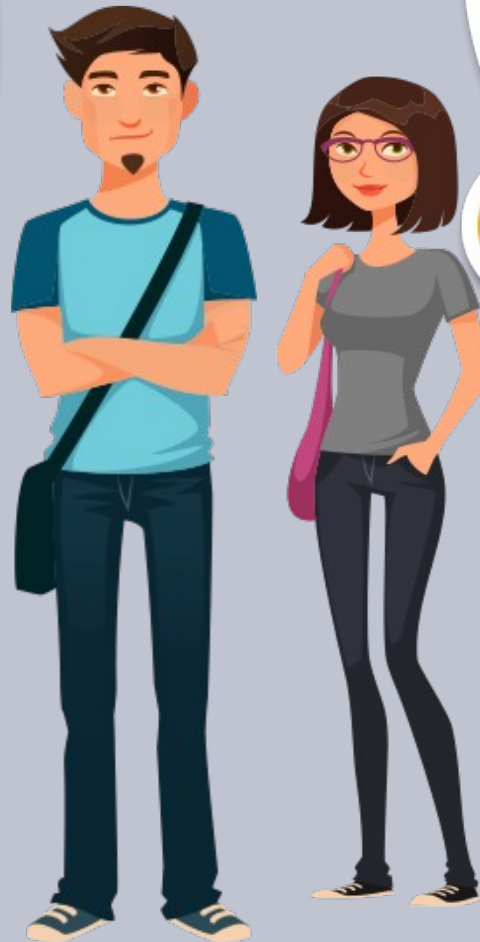
School Presentation

for entry autumn 2015

An admissions scheme for school leavers facing social and economic challenges in accessing college.

www.accesscollege.ie | www.facebook.com/accesscollege | twitter.com/accesscollegeie

Would
YOU like to
go to
college?



Where
would **YOU**
like to go?

How do
I
get there?



How do
I
apply?



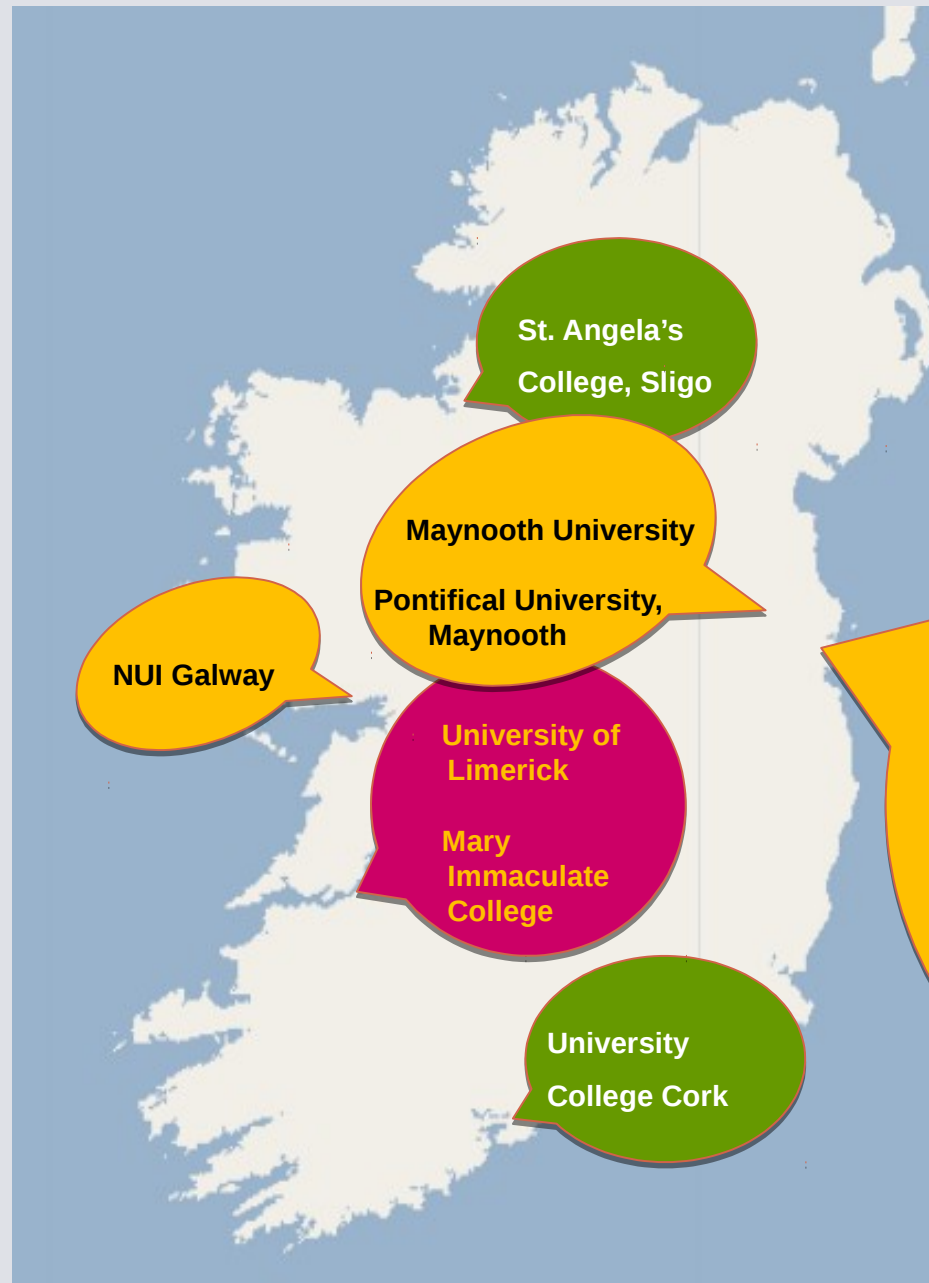
Have you
heard of
HEAR?

What is HEAR?

Higher Education Access Route is an admissions route for school leavers who for social, financial or cultural reasons are under-represented at third level education.



It was set up to ensure that all Leaving Certificate students have a fair and equal opportunity to progress to third level education.



St. Angela's
College, Sligo

Maynooth University

Pontifical University,
Maynooth

University of
Limerick


Mary
Immaculate
College

University
College Cork

NUI Galway

Where can I go to college?

- Dublin Institute of Technology
- Dublin City University
(incorporating
Mater Dei Institute of Education & St.
Patrick's College, Drumcondra)
- RCSI
- Trinity College, Dublin
- University College, Dublin
- Church of Ireland, College of Education
- Marino Institute of Education
- National College of Ireland



There is
something for
YOU
in college.



Arts...

Science...

Business....

Engineering...

Health Sciences....

Medicine....

IT.....

Clubs & Societies...

Athletics.....

Gaelic Football....

Mountaineering

Drama....Film..

Dance...

Volunteer

Make a difference



Meet
new
friends

Applying for a grant.

HEAR is **NOT** the SUSI grant

If you apply to HEAR,
you should also apply to **SUSI**
if you think you may be eligible

Why apply to HEAR?

- **Reduced points CAO offers** in the participating colleges provided you meet the minimum entry requirements.

- **Post-entry supports** such as financial, academic, social and personal.

Should I apply?

1.	Was your household income on or below €45,790 in 2013?
2.	Do you or your family have a Medical Card/GP Visit Card?
3.	Did your parents/guardians receive a means-tested social welfare payment for at least 26 weeks in 2013?
4.	Is your parents' or guardians' employment status under-represented in Higher Education?
5.	Have you attended a DEIS second level school for five years?
6.	Do you live in an area of concentrated disadvantage?



Talk to your
**parent /
guardian**

You must meet the **HEAR income limit**

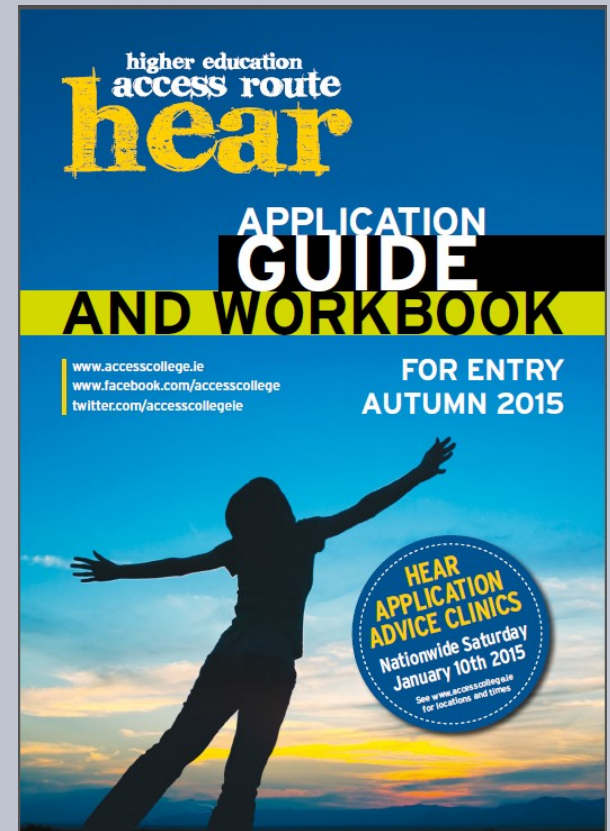
plus

the **right** combination of **2 other indicators**

to be eligible

How do I apply?

1. Apply to CAO at www.cao.ie by **1 February 2015**
2. Fill in your HEAR Application Guide & Workbook with parents or guardians
3. Complete all elements of the online HEAR application form by **1 March 2015**
4. Submit clear copies of supporting documents requested on your checklist to CAO by **1 April 2015**



How do I know what documents I need?

1. When you fill in your online HEAR application and you will receive a **checklist** at the end. This is based on the information you provided.
2. The **checklist** tells you what **documents** you need to fully complete your HEAR application.
3. Send in **all** documents on checklist to make a complete application before **1 April 2015**.

Sample supporting documents

P21 or Self Assessment Letter – Chapter 4 for **2013**

Social Welfare Form for **2013** Signed and Stamped
by Social Welfare official

RP50 Notification of Redundancy or Retirement
Lump Sum Letter for **2013**

Letter from TUSLA for Children in Care

Helpful Tips

- **Study and fill in the guide carefully with your parents / guardians.**
- **Complete the online application accurately.**
- **Accurate description of Parental Occupation.**

- **Request the required supporting documentation early.**
- **Send good quality copies of all pages of the correct documents.**
- **Submit all supporting documents requested.**

- **Keep proof of postage.**
- **Deadlines!**



Disability Access Route To Education

What is DARE?

The **Disability Access Route to Education (DARE)** is a supplementary admissions scheme which offers college places on reduced points to school leavers with disabilities.

DARE has been set up as clear evidence shows that disability can have a negative impact on educational attainment at school and progression to higher education.



Who Should Apply?

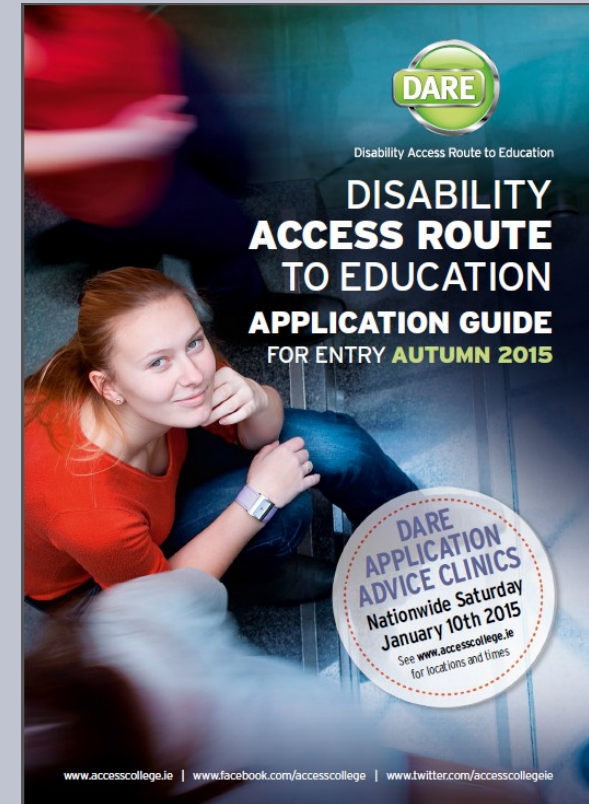
- Applicants whose disability had a significant impact on educational performance in school
- Applicants who may not be able to meet the points for their preferred course due to the impact of disability.
- Applicants under 23 years as at 1st January 2015

Disabilities eligible for consideration

- **Autistic Spectrum Disorders (including Asperger's Syndrome)**
- **ADD / ADHD**
- **Blind / Vision Impaired**
- **Deaf / Hard of Hearing**
- **DCD - Dyspraxia/Dysgraphia**
- **Mental Health Conditions**
- **Neurological Conditions (Brain Injury, Epilepsy, Speech & Language Disabilities)**
- **Significant Ongoing Illness**
- **Physical Disability**
- **Specific Learning Difficulty (Dyslexia & Dyscalculia)**

How do I apply?

1. Apply to CAO at www.cao.ie by **1 February 2015**.
2. Review your DARE Application Guide & Workbook with parents or guardians.
3. Complete Section A of the Supplementary Info Form and apply to DARE by **1 March 2015**.
4. Submit academic reference and evidence of disability to CAO by **1 April 2015**.



DARE / HEAR Timeline

DARE & HEAR closing date	1 March 2015
Supporting documents closing date	1 April 2015
Notification of eligibility	Late June 2015
Application recheck	July 2015
HEAR/DARE offers	August 2015
College Orientation	Late Aug /Early Sept 2015

Remember...



Disability Access Route To Education

Submit it!

Check it!

Send it!

higher education
access route
hear

Remember...

**You can apply to both
DARE & HEAR**

**Saturday
10 January 2015**

DARE and HEAR

**APPLICATION
ADVICE CLINICS**

Talk to **DARE** and **HEAR**
advisors about
your application

Drop in anytime
between 10am
and 2pm to
learn more about
DARE and **HEAR**

Further Information

www.accesscollege.ie



Welcome to Access College

Equality of Access to
Higher Education in Ireland



The Higher Education Access Route

(HEAR) is a college and university admissions scheme which offers places at reduced points to school leavers from socio-economically disadvantaged backgrounds.



The Disability Access Route to Education

(DARE) is a college and university admissions scheme which offers places at reduced points to school leavers with disabilities.

Further Information



cao.ie



susi.ie



qualifax.ie

Follow us on.....



**Facebook.com/
accesscollege.ie**



@accesscollegeie